



1d



2d



CMOS

cmos

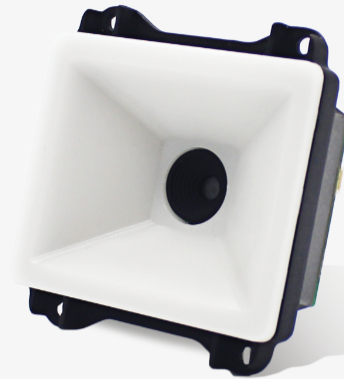


usb



TTL-232

ttl-232

**EM20-80**

oem scan engines

Features

Optimized on-screen barcode capture.

Making it incredibly reader friendly, the CPU powered EM20-80 is ready for whatever smartphone or tablet is presented to it. Not only is the EM20-80 optimized for screens, but also features excellent near field reading, a wide view angle and snappy barcode reading.

Designed for reliability.

The single PCB construction and vibration proof connectors make the EM20-80 resistant against vibration and improve reliability.

Compact construction.

The updated EM20-80 is the newest generation in the EM20 series and is lighter, thinner and more compact than ever. No matter the device, the EM20-80 can be easily integrated.

Power efficiency.

The advanced technology incorporated in the EM20-80 helps reduce its power consumption and lengthens service life.

Multiple Interfaces.

The EM20-80 supports USB, RS-232 and TTL-232 interfaces to meet diverse industry needs.

Application Scenarios

mobile
payment

selfservice



smarthome

EM20-80 technical specifications

Performance	ImageSensor	640x480CMOS
	Illumination	WhiteLED
	DepthofFieldEAN13 (13mil)	25mm-110mm
	DepthofFieldPDF417 (6.67mil)	35mm-45mm
	DepthofFieldData Matrix(10mil)	35mm-50mm
	DepthofFieldQR (15mil)	0mm-90mm
	MinimalPrintContrast	30%
	ScanAngleRoll	360°
	ScanAnglePitch	±40°
	ScanAngleSkew	±45°
	FieldofViewHorizontal	68°
	FieldofViewVertical	51°
Datacapture	1D	EAN-8,EAN-13,UPCE,UPCA,Code128,UCC/EAN128J2Of5,ITF-14,ITF-6,Matrix25,CodaBar,Code 39,Code93,ISSN,ISBN,Industrial25,Standard25,Plessey,Code11,MSI-Plessey,UCC/EANComposite, GS1Databar,Code49,Code16K
	2D	PDF417,QRCode,MicroQR,DataMatrix,Aztec,Maxicode,ChineseSensibleCode,GMCode,Micro PDF417Code,CodeOne
Physical	Dimension\$mm)	61.5(W)x65.5(D)x31.9(H)mm(max)
	Weight	33g
	Interfaces	TTL-232RS-232,USB
	Notifications	Beeper,GreenLEDIndicator
	InputVoltage	12-pinFPCconnector3.3-5VDC±5%4-pinboxconnector3.3-5VDC±5%
	Current@3.3VDC Operating	335mA(typical),479mA(max)
	Current@3.3VDC Standby	93mA
	Current@5VDC Operating	237mA(typical),319mA(max)
	Current@5VDC Standby	69mA
	PowerConsumption	3.3VDC:1103mW(typical)5VDC:1129mW(typical)
Environmental	AmbientLight	0~100,000lux(natural light)
	OperatingTemperature	-40°Cto60°C
	StorageTemperature	-40°Cto75°C
	Humidity	5%to95%(non-condensing)
Accessories	Standard	USB,RS-232,DC5VpoweradapterwithRS-232cable
Certifications	Certifications	FCCPart15ClassB,CEEMCClassB